

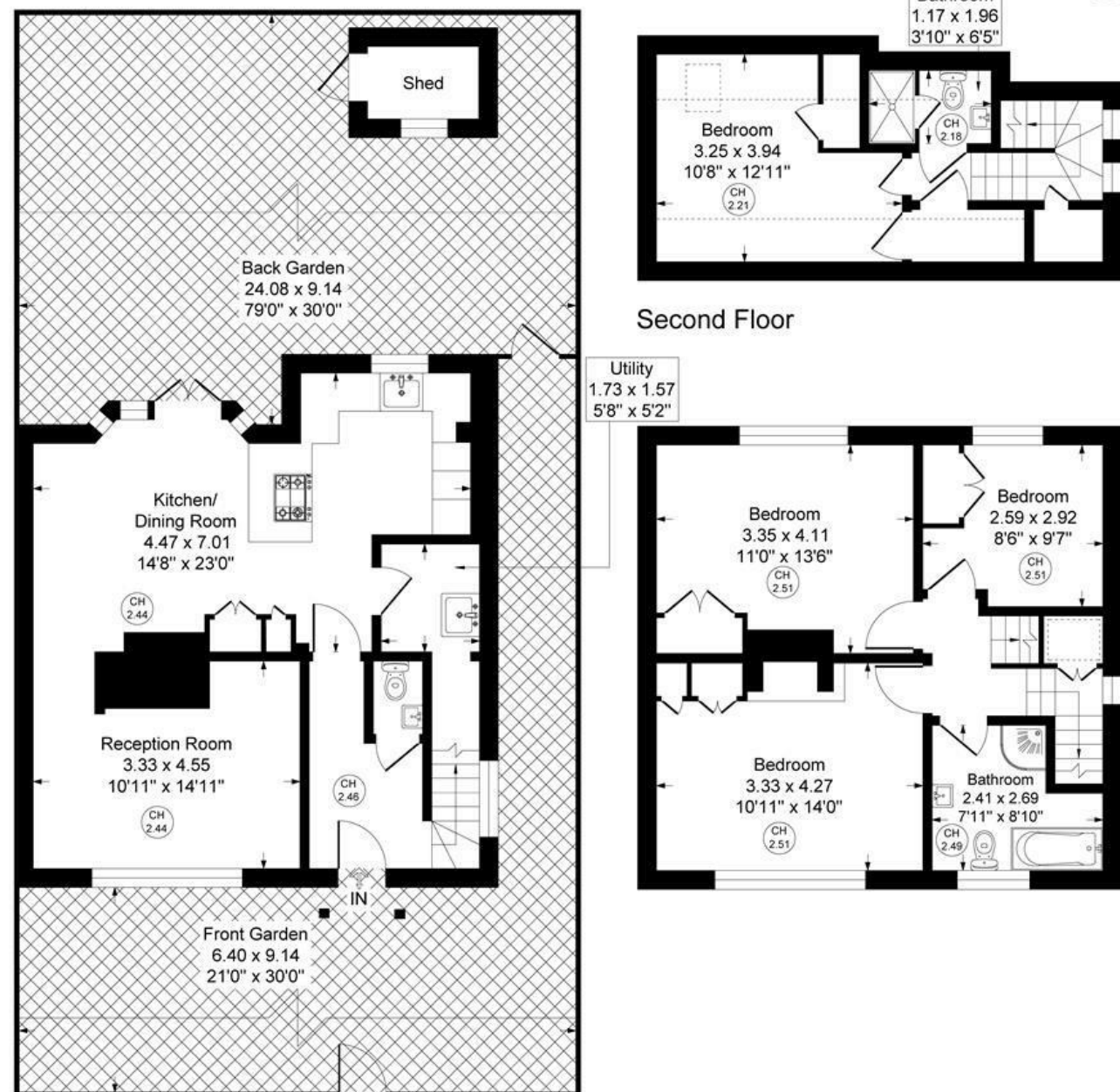


glentree
RENTALS

020 8209 1144
www.glentree.com

Brookland Rise, London, NW11

Approximate Gross Internal Floor Area = 124.0 sq m / 1335 sq ft (Including Restricted Height)



Ground Floor

First Floor

Illustration for identification purposes only, measurements are approximate, not to scale.



Brookland Rise, NW11

Newly refurbished four-bedroom house on Brookland Close, NW11, finished to a very high specification throughout. Arranged over approximately 1,335 sq ft, the property offers a spacious open-plan living and dining area with direct access to a private garden. The modern kitchen includes integrated appliances and ample storage. There are four well-proportioned bedrooms and two contemporary bathrooms finished to an excellent standard.

Located on a quiet residential road on the North Side of Hampstead Garden Suburb, the house is close to local amenities, schools, and excellent transport links

Available June 2026

£1,050 Per Week



RENTALS 020 8209 1144
SALES 020 8458 7311
FAX 020 8209 0307

E rentals@glentree.com
E sales@glentree.com
W www.glentree.com

Glentree Estates Ltd
698 Finchley Road
London NW11 7NE

